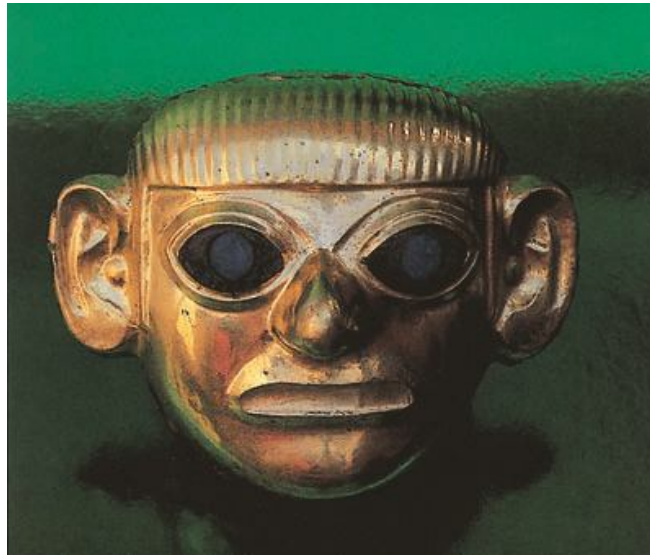


EXTENSION: PRE-INCA ARCHAEOLOGICAL LEGACY CHICLAYO & TRUJILLO

(Prices valid through December 24th 2011)

(ST-173)

(3 days / 2 nights)



A quick getaway to Trujillo and Chiclayo to learn more about the cultural heritage left by pre-Inca civilizations in Northern Peru. Visits include the newest discovery, the mummy of Lady of Cao, found in the 'El Brujo' archaeological complex, as well as its modern museum.

DAY 1 LIMA – CHICLAYO

Upon arrival transfer to the hotel.

DAY 2 CHICLAYO – TRUJILLO (B)

We leave in the morning for Lambayeque to visit the Royal Tombs of the Lord of Sipan Museum. The tomb was discovered in 1987 in Sipan. The lord ruled around 200 AD over the Moche culture and his gold-laden tomb is considered to be the richest in the Americas.

We then travel by regular bus to Trujillo a charming colonial city. In the afternoon, we head south of town to visit the Temples of the Sun and Moon, built by the Moche Culture.

These temples played a major role for the Moche culture (pre-Inca), which developed between 100 and 900 AD. The finely decorated Temple of the Moon represents the spiritual center of the Moche culture. They apparently sealed the bodies of deceased rulers into the 'huaca' and then covered the mud-brick platform with a new, stepped platform above it. Within the site archaeologists have found, among a wealth of ceremonial artifacts, about 40 skeletons of sacrificed adult male individuals. Some of the walls feature dramatic multi-colored murals depicting different divinities, the most of important of which being Ai Apaec or 'Decapitator'. Ai Apaec is thought to have figured prominently in the beliefs surrounding the practice of sacrifice. As you stroll through the Temple of Moon you can get a panoramic view over the temple of the sun (visitors are not allowed to enter this temple) considered one of the largest adobe structures in the world.

DAY 3 TRUJILLO – LIMA (B,L)

Morning visit to 'El Brujo' (the wizard) archaeological complex. Located 35 km north of Trujillo, this site was built by the Mochica culture (300 AD). It consists of a long wall decorated with polychromatic reliefs display Moche scenes and three pyramidal temples, Huaca Prieta, Huaca Cortada and Huaca Cao. It was in the last pyramid that a spectacular discovery hit the headlines worldwide in 2005. A mummy of a woman and ceremonial artifacts belonging to the ancient Moche culture was found. We will visit the new museum (opened in April '09) that displays the female mummy, dated back to 450 AD, yet baptized as 'Lady Cao'. Hair and skin were perfectly preserved and even tattoos in her arms can be easily recognized. The visit to the museum perfectly complements the stop at 'El Brujo'. It allows a better understanding about the context in which this northern culture flourished and its lifestyle.

Lunch in the charming fishing village of nearby Huanchaco featuring fishing rafts made of reed. Transfer to the airport.

Price per person in USD sharing TWIN	Private Services					Single Suppl.
	2	4	6	8	10	
Tourist	397	342	329	329	323	51
First	429	374	361	361	355	101

Domestic flights (net price per person in USD)	
Lima – Chiclayo and Trujillo-Lima	380*

* Air fares subject to change according availability

City	Tourist	First
Chiclayo	Costa del Sol Chiclayo	Gran Hotel Chiclayo
Trujillo	Posada del Rey	Libertador Trujillo

SERVICES INCLUDED

- Transfers from/to hotel in Chiclayo and Trujillo
- Accommodation based on sharing TWIN in the selected hotel category
- Excursions as noted in the itinerary
- Private services with local English, French, German or Italian speaking guide
- Regular bus Chiclayo - Trujillo
- Entrance fees to the sites mentioned in the itinerary
- Meals as noted (B: breakfast, BoxL: Box lunch, L: lunch, D: dinner)

NOT INCLUDED

- Domestic flights (see separate cost above. Includes airport tax)
- Accommodation in Lima
- Tips